

# UL GSMA Consumer RSP SGP.23 Subscription Manager Test Suites

## Overview

UL GSMA Consumer RSP SGP.23 Subscription Manager Test Suites help companies in the Consumer Remote SIM Provisioning (RSP) industry — such as mobile network operators (MNOs), subscription manager vendors and embedded universal integrated circuit card (eUICC) manufacturers — who want to test their Subscription Manager - Data Preparation + (SM-DP+), or the Subscription Manager - Discovery Server (SM-DS).

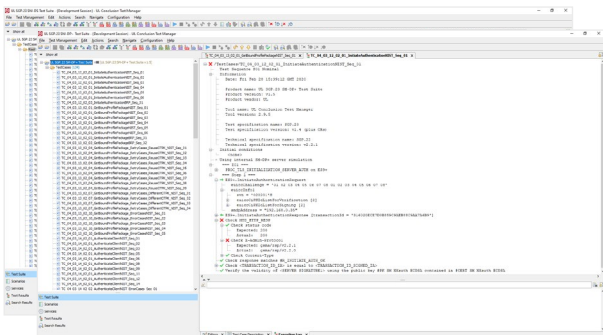
## Benefits

The UL GSMA Consumer RSP SGP.23 Subscription Manager Test Suites empower you to validate that the SM-DP+ or SM-DS complies with GSMA's SGP.23 Remote SIM Provisioning Test Specification. Fully validate your implementation without needing to interface with other entities in the Consumer RSP architecture.

## Features

UL GSMA Consumer RSP SGP.23 Subscription Manager Test Suites comprises two individual test suites: the UL SGP.23 SM-DP+ Test Suite and the UL SGP.23 SM-DS Test Suite. Both consist of several simulation modules used to test the SM-DP+ or SM-DS.

- **Full simulation of GSMA Subscription model procedures** performed by all entities in the Consumer RSP ecosystem
- **Test individual GSMA ES interfaces** with support for testing all functions on the ES2+, ES8+, ES9+, ES11, ES12 and ES15 interfaces



## Key benefits

- Simulates core Consumer RSP architecture elements
- Full coverage of SGP.23 Section 4.3, 4.5 and 4.6 Interface Compliance and Section 5.3 Platform Procedures test cases for SM-DP+ or SM-DS nominal and error test sequences as appropriate
- Test individual GSMA ES interfaces
- Confirm that SM-DP+ and SM-DS comply with GSMA's SGP.21 architecture, SGP.22 implementation and SGP.23 test specifications
- Automated report generation
- Reduce your time to market

## Specifications

### Test Suites

- UL SGP.23 SM-DP+ Test Suite
- UL SGP.23 SM-DS Test Suite

### Supports

- Automated and manual testing
- Synchronous and asynchronous message flows
- Complete SM-DP+ and SM-DS interface testing
- Communication Support for HTTP TLS v1.2, Protocol for Profile Protection — including GSMA's Common Mutual Authentication procedure — and Secure Channel SCP03t
- Comprehensive reporting

### GSMA ES Interfaces

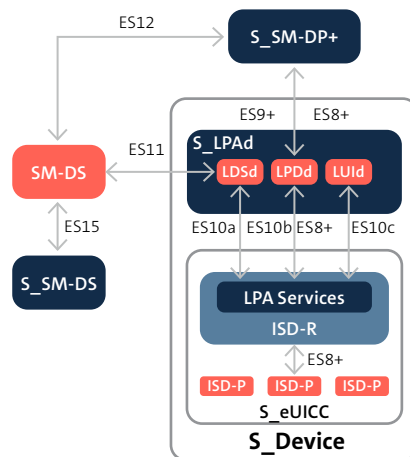
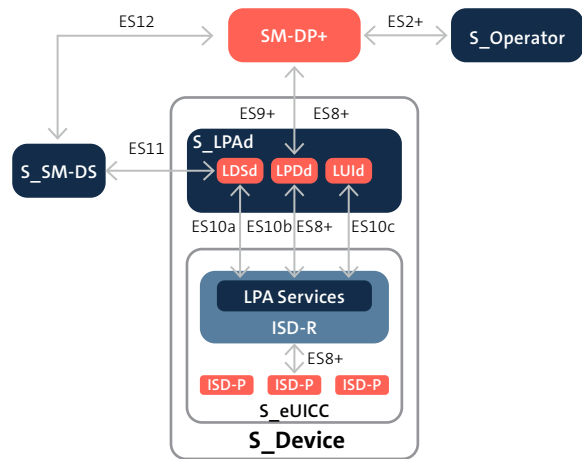
- ES2+ (operator to SM-DP+)
- ES8+ (SM-DP+ to eUICC): The SM-DP+ uses this to load profiles onto the eUICC via SCP03t securely
- ES9+ (SM-DP+ to LPDd): The SM-DP+ and the LPA use this to secure transport for delivering the Bound Profile Package from the SM-DP+ to the eUICC via HTTP TLS v1.2 and the GSMA's Protocol for Profile Protection
- ES11 (LDSd to SM-DS): Allows the LPA's LDSd component to retrieve event records for its eUICC
- ES12 (SM-DP+ to SM-DS): Allows any SM-DP+ to issue or remove event registrations on the SM-DS
- ES15 (SM-DS to SM-DS): Allows event registrations and event deletions to cascade from the Alternative SM-DS to Root SM-DS

### Validations

- GSMA SGP.21 architecture specification
- GSMA SGP.22 implementation specification
- GSMA SGP.23 test specification

### Covers

- Interface compliance testing for off-card interfaces
- Profile download and installation
- Common mutual authentication
- Notification types and behaviors
- SM-DS registration, retrieval and deletion
- Nominal and error test sequences for functional SM-DP+ and SM-DS testing
- Support for custom certificate chains



## UL Conclusion Test Manager

UL GSMA Consumer RSP SGP.23 Subscription Manager Test Suites run on UL Conclusion Test Manager Conclusion Test Manager provides a user-friendly test management application consisting of a test engine that can create and send messages in many variations via several interfaces to the system under test. This cutting-edge test management system manages the test process, providing flexibility in configuring the test execution and reporting results.

For more information, visit [UL.com/GSMA-CSMT](https://www.ul.com/GSMA-CSMT)



Safety. Science. Transformation.™