



# Positioning Devices

Demonstrate your positioning devices meet industry standards for safety and performance.

## Overview

Positioning devices cover a wide variety of products such as cable ties, fixing devices, bundling devices, cable wraps, wiring ducts, and similar types of related hardware and are intended to provide mechanical means for supporting and positioning wires and cables for factory installation within equipment/devices and for field installation to meet national installation codes. For more than 20 years, UL has supported this industry by developing standards, testing, and certifying positioning devices that address safety and performance needs for both electrical and non-electrical applications.

## Evaluation

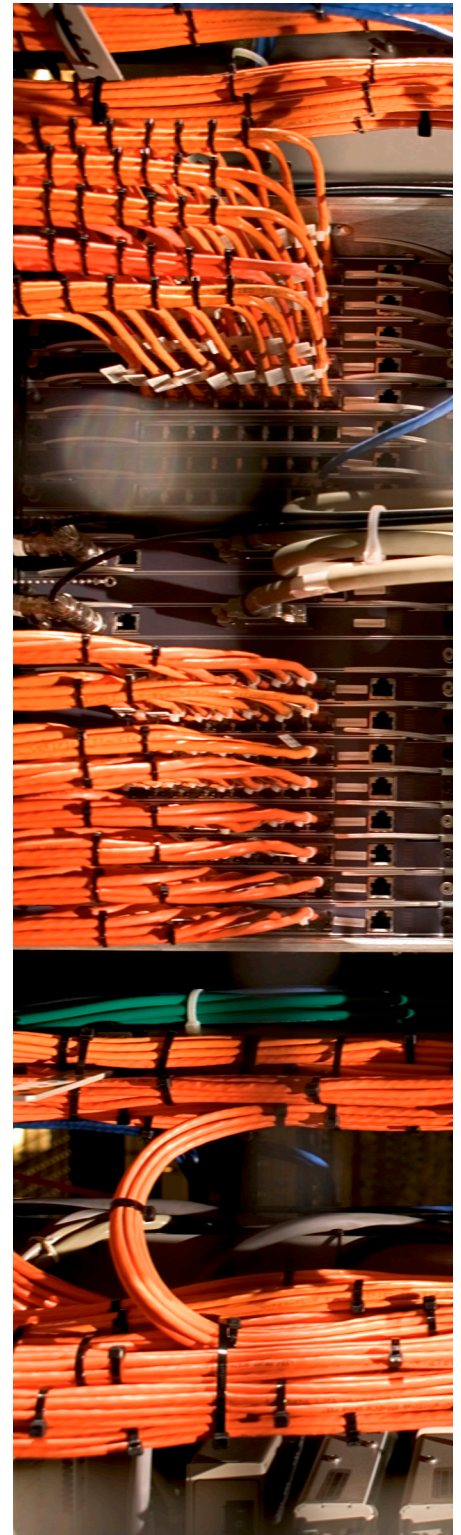
UL works closely with positioning device manufacturers to identify the type of device (cable tie, wraps, fixing device, etc.) and performance tests that are appropriate based on its intended use. UL will utilize ANSI/UL 62275, "Cable Management Systems - Cable Ties for Electrical Installations" for cable ties and fixing devices or ANSI/UL 1565, "Positioning Devices," for cable ducts, mounts and other similar devices .

The evaluation generally includes flammability, installation, minimum and maximum operating temperature, minimum installation temperature, and mechanical property evaluations before and after the appropriate environmental exposures. In addition, cable ties and fixing devices may also be investigated for smoke and heat generation, corrosion resistance, weatherability characteristics, and/or as primary support for a flexible conduit, flexible tubing, or cable.

## Certification

Positioning devices that meet UL's evaluation requirements are certified under UL Category Code ZODZ or ZODZ2 and authorized to bear one of the following UL Marks. The traditional Listed UL Mark or the new enhanced UL Certification Mark are intended for both factory or field installation in accordance with ANSI/NFPA 70, "National Electrical Code" (NEC). The backwards "UR" Mark for components that are intended to be factory installed in another device or product.

UL's Certification Program creates value for positioning device manufacturers by providing them with an independent and objective means to demonstrate to the supply chain that their products meet critical safety and performance requirements. This certification program enables specifiers, buyers, and inspectors quick and easy access to a list of compliant positioning devices through UL's online Certifications Directories ([www.ul.com/database](http://www.ul.com/database)).



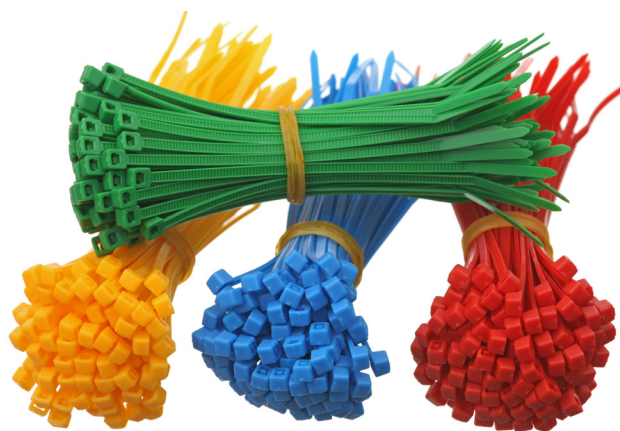
For more information please contact your local Customer Service Professional at [www.ul.com/contactus](http://www.ul.com/contactus) or at [PMSales@ul.com](mailto:PMSales@ul.com).



All positioning devices that bear the UL Mark fall under UL's Follow-Up Service (FUS) program. UL's rigorous FUS Program verifies that the components which bear the UL Mark continue to be manufactured in compliance with UL's safety requirements.

### **Certification for Canada and Europe**

Manufacturers of positioning devices often choose UL to gain critical market access to other regions. UL can also evaluate these products to the applicable standards in Canada and Europe for both factory and field installation to meet national electric codes, for example CAN/CSA-C22.1, "Canadian Electrical Code, Part I" ("CE Code"). Products found to meet the requirements of CAN/CSA-C22.2 No. 62275 can bear a UL Mark with a "c" to specify Canada and are certified under UL Category Code ZODZ7 or ZODZ8. Products found to meet the requirements of the IEC 62275 or EN 62275 requirements can additionally mark with a reference to the applicable standard. Since all these standards are harmonized to the IEC Standard with national differences, minimal evaluation is typically needed to extend certification to these other regions.



### **Getting Started:**

For additional questions or to get started with a positioning device evaluation, please contact your local Customer Service Professional at [www.ul.com/contactus](http://www.ul.com/contactus) or at [PMSales@ul.com](mailto:PMSales@ul.com).

---

For more information please contact your local Customer Service Professional at [www.ul.com/contactus](http://www.ul.com/contactus) or at [PMSales@ul.com](mailto:PMSales@ul.com).